



BEFORE YOU GO FISHING CHECKLIST!!!

- ✓ RWA and Loose smut control
- ✓ Storage and grain hygiene
- ✓ Soil testing Deep N and 0-10cm
- ✓ Grain germination and vigour testing
- ✓ Weed seed collection for resistance testing
- ✓ Ag-chem forecasting
- ✓ Fertiliser product choices
- ✓ Inoculant Requirements

AG Chemical

I just want to give a better insight of what our industry is facing in regards to product supply out of China. As you would be aware the Chinese Government have put restrictions on all industrial and manufacturing zones to appropriately deal with all forms of waste and environmental issues associated with manufacturing Ag Chemicals. To give you an understanding of what has happened over the past 12 months there were over 1800 factories manufacturing in china. Well over half that amount have been closed permanently or until their facilities meet the standard set out by China's New Government environmental policies. Some of these factories will never reopen and others will be brought out by the big end of town, the Government want to over the next 5 years bring the number of Ag-Chem manufactures back to 500.

With all this in mind supply has become very tight on all major products, so for our business ordering 12 months in advance is becoming the norm if we are to secure



EPAGnFERT
CHEMICAL - FERTILISER - SEED

1-2 Miller Crescent, Kimba SA
PO Box 225
86272233

troy@epagnfert.com.au

"Locally Owned Locally Grown"

What a challenging year it has been with limited sowing rain to start the season off, a get out of jail rainfall in August only to be hit with frost. Top that off with below average rainfall for the past 3 months. With Harvest now upon us there have been some surprising results to date but I'm sure there will be some disappointing crops also, lets hope prices make up for the lack of yield. In the future we will strive to produce a quarterly newsletter with industry news import to all our businesses.

I want to provide a better understanding of what drives our two major markets Ag Chem and Fertiliser, so as to make a more informed decision when securing your input products for the coming season.

Loose Smut

supply.

Your support in the process is going to be vital if we are going to make sure our forecasting for products are priced right and we have them in store in time for the relevant seasons. I will be in contact over the coming weeks to sure up your 2019 requirements with what I have ordered, please feel free to ring and discuss.

We are also starting to see the effects of the import tariffs on LV ESTER 680 with 25-35% increases in this product from last season, I have good volumes locked away so please give me a ring to secure volume's for summer application.

Spartacus Barley has shown loose smut in very low percentages in parts of the Kimba district. The take home message is that Spartacus is a susceptible variety and there are treatments on the market to control loose smut. Evergol Energy is the best product on the market with a cost @ \$3.60 to \$5.00/ha but keep in mind no product will give you 100% control. Coverage is the key when applying seed treatments and well worth considering the use of Evergol Energy and having it professionally applied as I'm sure it is only a small part of your cropping program. At 1.3L/t you will also pick up suppression of Rhizoctonia, Pythium and Crown rot.



New Crop Varieties



A lot is happening in the plant breeding world, with all of the major broadacre crops as focus. AGT our major players in the plant breeding world in South Australia have just relocated to there amazing new facility at Roseworthy

Bateman Lupins- New high yielding Australian sweet lupin, higher yields than Jurien and Mandelup, good disease and virus package.

Butler Peas- a great option to replace Gunya peas as it has high level of resistance to Bacterial blight which we saw in Kimba this year. Kaspera type, mid flowering semi leafless, semi-dwarf type with superior grain quality and pod shatter resistance at maturity.

Marne Beans- Highest yielding Faba Bean for low rainfall, short season early flowering, improved rust resistant to pathogen type 1 ascochyta blight but moderately susceptible to the new type 2 ascochyta blight it has better all round disease package to fiesta.

Hallmark XT Clearfield lentils- New clearfiled lentil, 5-15% higher yielding than Hurricane XT which would put the variety up there with the highest yielding lentil on the market. It has better weed control options over conventional varieties Jumbo 2 but not the disease package.

Planet Barley- A new conventional variety with a malt classification for 2018 showing excellent yields around our district sown at low seeding rates of @40kg/ha. It has been planted around the world with great success as a malt quality and preferred variety by brewers, It is susceptible to spot form net blotch(look at seed treatment options), good head strength and grain size, great early vigour with the ability tiller very well.

Canola- As is the case every year there is an early order scheme on all orders of canola please give me a ring to discuss your options that best suit your rotation. This could consist of a Clearfield hybrid or Hybrid TT varieties.

There are a couple of new wheat varieties which I don't think come near Scepter but could be worth keeping an eye on. Devil only released in WA which has AH/APWN (noodle) classification and the new

Vixen APW early-mid maturity but has higher screenings and lower test weight than Scepter.(I would be keeing an eye on this variety & NVT trial results).

Clearfield varieties like **Chief CL APW** still look to be as good as there is on the market, the only competitor to this

variety is the new **Sheriff CL APW** which could be worth a try if your looking for a new CL variety.

Razor CL looks to be one of the highest yielding CL variety but is only ASW classification could well be worth keeping an eye on in the NVT trials also to see if there is significant yield increase over the current CL APW varieties.

If you require further information please give me a ring.

Plant Back Restrictions

Something to be thinking about is your plant backs and the repercussions this may have on your 2019 cropping rotation. Specifically the Clearfield chemistry like intervirx , imazapic and imazapyr where it's been applied to your CL barley. The plant backs take place from the application date and 250mm and 9 months for susceptible crops. Traditionally we follow our CL barley with a pea crop which is ok provided we have had the 250mm rain and we adhere to the label plant backs. There was significant stunting this year with peas sown into barley stubble with less than 150mm rainfall!! August rainfall certainly helped crops recover. So we pushed the boundary's but we have to be careful of the restrictions, to date from June to November Kimba rainfall is around 135mm.

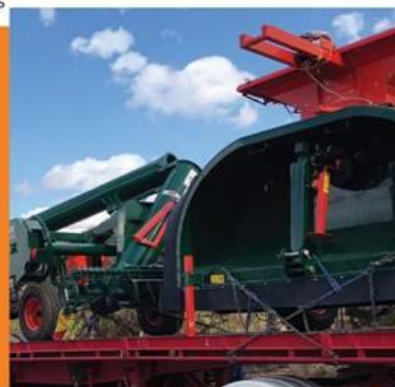
Grain Storage Options

We have grain bags and machines in stock. Keep your eye out as grain buyers are offering on farm storage contracts with grain bags which is very attractive.

Make sure when storing grain on farm that your grain hygiene is up to date by treating sheds, silos, in and around bases, boundary's and around the storage site. Clean up any spilt grain and if you have grain stored in a drum by your chook shed make sure you don't have insects present as this is a classic source of infection to new seasons grain.

[GRDC Grain Storage Hygiene](#)

[GRDC Grain Storage Grow Notes](#)



[GRDC Grain Storage Grow Notes](#)

[GRDC Grain Storage Hygiene](#)

2019 Fertiliser Financing

Design a payment plan that best suits your situation!

- Less than 1%/tonne/month interest
- Free up cash flow throughout the year
- Simple and easy to Apply
- NO red tape or paperwork to work through
- Call me to discuss your options



24D Products - What you need to Know

As you may or may not be aware the new application requirements by the APVMA new [2,4-D label instructions](#) for the use of all 24D products which include over 200 products which took affect

Earlier this month. The take home message is you have to keep records of all applications, use course droplets and adhere to the buffer zones for the product use and rate. (You would have Received a copy of the new labels in a



Fertiliser

Fertiliser has risen over the past 12 months based on the lower AUD (down @8% on this time last year). Global FOB pricing seems to have peaked and could soften in the coming weeks. There was some commentary around that the AUD was to continuing to collapse further (low 60c) but now that the mid-term elections in the US have taken place the Trump camps view on trade sanctions are changing. The potential lifting of the sanctions could strengthen and stabilise foreign currency, ideal for importing not ideal if we are exporting. (ie. for every 1c drop in AUD will equate to \$12-15/tonne increase in fertiliser pricing).

2019 pricing is \$70-\$100/t up on last year. Traditionally demand internationally for fertiliser starts December/January and pricing could come back depending on a number of factors, I will keep you posted. In the meantime start thinking about products and tonnage, there are some excellent products available with sulphur and traces which are significantly cheaper than previous years.

Upcoming Events

30th November will be EP AG n FERT's 3rd Birthday!!!! Without your support this would not have been possible, so on behalf of Myself, Kelly, Bob and Kim would like to take this opportunity that thank each and every one you for your ongoing Loyalty and the partnership that we have developed with your business over the past 3 years.

20th DECEMBER .. Thursday Christmas drinks and BBQmore information to follow via txt pencil this in your diary

Weed Seed & Seed Purity Collection

If you have any concerns with resistance weeds that you wish to get analysed ie. Ryegrass for trifluralin resistance etc, or testing for grain seed quality, purity vigour and germination.

Tests are also available for pulse grains once cropped top for seed viability, now is the time to start collection and sending samples away to beat the rush. If you have any questions give me a ring.



Merry Christmas from everyone at EP AG n Fert

